

DIG CORPORATION THREE-YEAR WARRANTY

DIG CORPORATION warrants these products to be free from defects in material and workmanship for a period of three years from date of purchase. This warranty does not cover damage resulting from accident, misuse, neglect, modification, improper installation or subsection to line pressure in excess of 50 lbs. per square inch. This warranty shall extend only to the original purchaser of the product for use by the purchaser. This warranty shall not cover batteries or any malfunction of the product due to battery failure. The obligation of DIG CORPORATION under this warranty is limited to repairing or replacing at its factory this product which shall be returned to the factory within three years after the original purchase and which on examination is found to contain defects in material and workmanship.

DIG CORPORATION SHALL IN NO EVENT BE LIABLE FOR ANY INCIDENTAL OR CONSEQUENTIAL DAMAGES OF ANY KIND; THE SOLE OBLIGATION OF DIG IS LIMITED TO REPAIR OR REPLACEMENT OF DEFECTIVE PRODUCTS. SOME STATES DO NOT ALLOW THE EXCLUSION OR LIMITATION OF INCIDENTAL OR CONSEQUENTIAL DAMAGES, SO THE ABOVE LIMITATION OR EXCLUSION MAY NOT APPLY TO YOU.

Unattended use for prolonged periods without inspection to verify proper operation is beyond the intended use of this product, and any damage resulting from such use shall not be the responsibility of DIG CORPORATION. There are no warranties which extend beyond the description on the face hereof. In the case of purchase of the product for use other than, for irrigation purposes, DIG CORPORATION hereby disclaims any implied warranties including any warranties of merchantability and fitness for a particular purpose. In the case of the purchase of the product for personal, family or household purposes, DIG CORPORATION disclaims any such warranties to the extent permitted by law. To the extent that any such disclaimer or implied warranties shall be ineffectual, then any implied warranties shall be limited in duration to a period of one year from the date of the original purchase for use by the purchaser. Some states do not allow limitation on how long an implied warranty lasts, so the above limitation may not apply to you.

In order to obtain performance under this warranty, the unit must be returned to the factory, along with proof of purchase indicating original date of purchase, shipping prepaid, addressed as follows:

DIG CORPORATION, 1210 Activity Drive, Vista, CA 92081. Repaired or replaced units will be shipped prepaid to the name and address supplied with the unit returned under warranty. Allow four weeks for repairs and shipping time. Repair of damaged units not otherwise within warranty may be refused or done at a reasonable cost or charge at the option of DIG CORPORATION.

This warranty gives you specific legal rights, and you may also have other rights which vary from state to state.

1.800.322.9146 FAX: 760.727.0282



1210 Activity Drive
Vista, CA 92081-8510

www.digcorp.com
dig@digcorp.com

Printed in the USA. We at DIG strongly believe in conservation.
Please recycle whenever possible. 062717 REV C 26-100



INSTALLATION INSTRUCTIONS

Drip and Micro Sprinkler Watering System

Model GE200

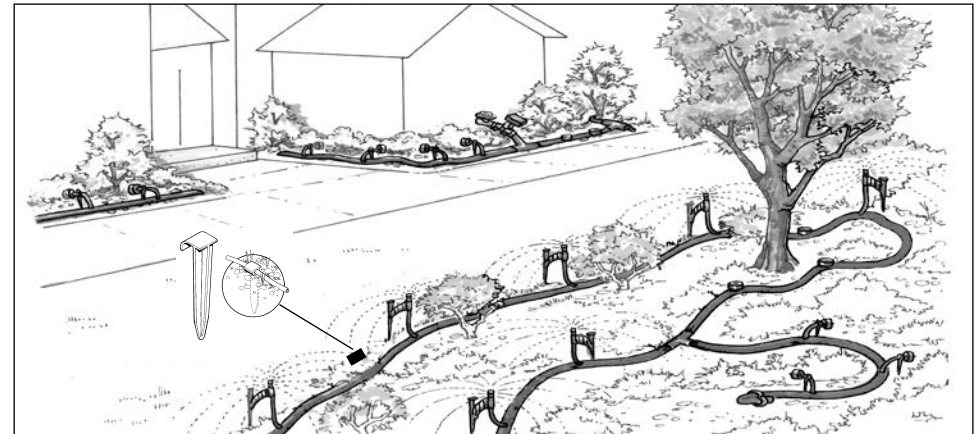
INTRODUCTION

Thank you for purchasing the DIG Model GE200 Drip and Micro Sprinkler Watering System. Please take the time to read through the enclosed instructions and follow them step by step. If you have any questions, please call our customer service line at 1.800.344.2281.

ABOUT YOUR GE200 KIT

Let your landscape thrive with this deluxe drip watering kit for trees, shrubs, groundcover, flowers and roses. The GE200 contains everything you need to irrigate an area up to 700 square feet. Use these guidelines to design and install a reliable, efficient low-volume irrigation system that conserves water and promotes a healthy environment.

LAYOUT EXAMPLE

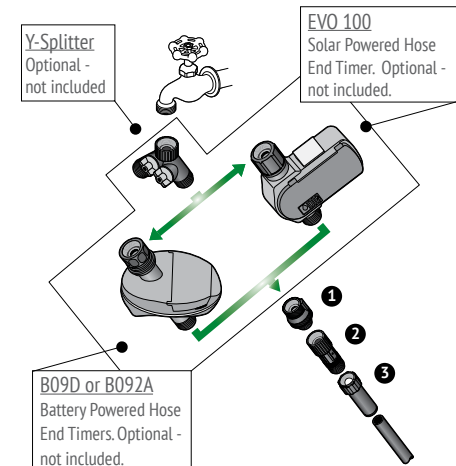


INSTALLATION

Begin your installation at the water source by attaching the backflow preventer to your faucet **1**, then attach the 25-PSI preset pressure regulator **2** to the backflow preventer. Connect the poly tubing to the hose adapter and attach it **3** to the pressure regulator.

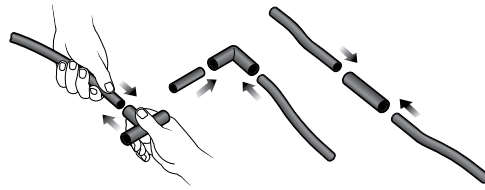
If you wish to automate the system, you can use a DIG battery or solar operated controller (model B09D/B092A or EVO 100), available online or in a store near you.

Next, lay down your 1/2" poly tubing. If you plan to leave it above the ground, allow the poly tubing to sit in the sun before installation; this will make it easier to work with. Use stakes to secure the poly tubing to the soil.



Connecting and installing 1/2" fittings:

To install your 1/2" fittings, cut the poly tubing with a hand pruner or scissors, being careful to keep dirt from entering the line. Push the poly tubing into the fitting by wiggling it as you apply force.



Connecting 1/4" fittings:

1. Force a barb or tee into the end of the 1/4" micro tubing by pushing it in while moving it from side to side.

To connect the end of 1/4" micro tubing to 1/2" poly tubing:

2. Punch a hole in the 1/2" poly tubing with the punch tool.

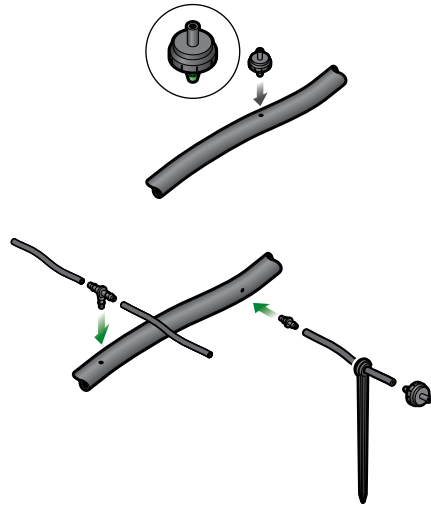
3. Insert the open side of the barb or tee into the hole in the 1/2" poly tubing.

TIP: To ease installation, warm the ends of the micro tubing in a cup of hot tap water for 20 seconds prior to barb installation.



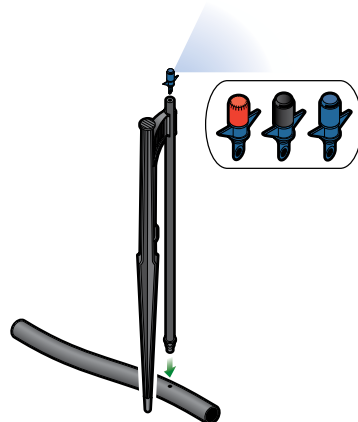
Installing drippers to 1/2" poly tubing:

Drippers are installed by punching a hole into 1/2" poly tubing and snapping the larger barbed side of the dripper in. If your tubing is buried, the drippers should always be placed above the ground using 1/4" micro tubing.



Installing drippers to 1/4" micro tubing:

For plants far from the poly tubing, or if the poly tubing is being buried, first insert a 1/4" barb or tee into one end of the 1/4" micro tubing, then insert the barb or tee into the punched hole in the 1/2" poly tubing and run the micro tubing to the plant. Next, insert the barbed inlet of a dripper into the end of the micro tubing and secure it with a stake.



Installing a micro sprayer to 1/2" poly tubing:

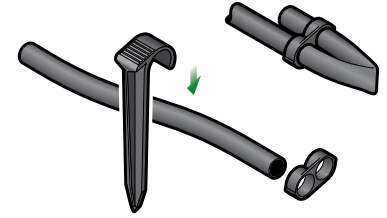
Install a micro sprayer to 1/2" poly tubing using the same method as used for a dripper. First, install the spike assembly with the micro tubing, then flush the line before threading the spray head with the pattern that you selected. We recommend installing micro sprayers a minimum of six inches above the surface with around five to six inches of spacing for best coverage.

Initial system start-up

Before turning the system on for the first time, leave all 1/2" tubing ends open, turn your water on and allow it to run freely for a few minutes. This will flush out any dirt or debris that may be in the line.

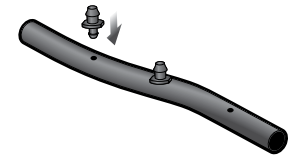
Close the end of the line by using a "figure 8" hose end or end cap. Check to see that the drippers and micro sprinklers are operating correctly and that no leakage is occurring.

Use stakes to secure the poly tubing to the ground.



Repairing or plugging a hole on 1/2" poly tubing:

If leakage occurs on 1/2" tubing at the base of a dripper or micro sprinkler, remove that dripper/micro sprinkler and insert a goof plug to close the hole, then reinsert the dripper or micro sprinkler in a different place.



For detailed information, see the DIG Drip Guide or go to www.digcorp.com/dripguide to download the PDF.

WATERING SCHEDULE

Open the faucet for 45 minutes to one hour every two to three days, depending on your location, weather and soil type. Faster draining, lighter soils will need to be irrigated more frequently than heavy, soil soils with high clay content. After a few days, check the soil and the health of the plants, and adjust the watering schedule as needed. If you have an irrigation controller and additional time is required, adjust the irrigation controller program with a longer watering duration and/or additional start times.

CONTENTS

	(1) 3/4" Backflow Preventer with FHT x MHT		(4) 90°, 180° and (3) 360° Sprayers on Threaded Barb
	(1) 3/4" FHT Preset Pressure Regulator at 25 PSI		(1) Universal Spike Assemblies with Micro tubing & Barb
	(1) 3/4" FHT Swivel Adapter with Screen		(20) 1-GPH PC Drippers
	(1) 200' of 1/2" Polyethylene Drip Tubing .600 ID x .700 OD		(10) 1/4" Tees
	(1) 50' of 1/4" Micro Tubing		(12) 1/4" Barbs
	(1) 1/2" Compression Couplings		(20) 1/4" Tubing Holder Stakes
	(4) 1/2" Compression Tees		(10) Goof Plugs
	(4) 1/2" Compression Elbows		(1) Hole Punch
			(10) 1/2" Tubing Holder Stakes
			(4) Figure "8" Hose Ends